

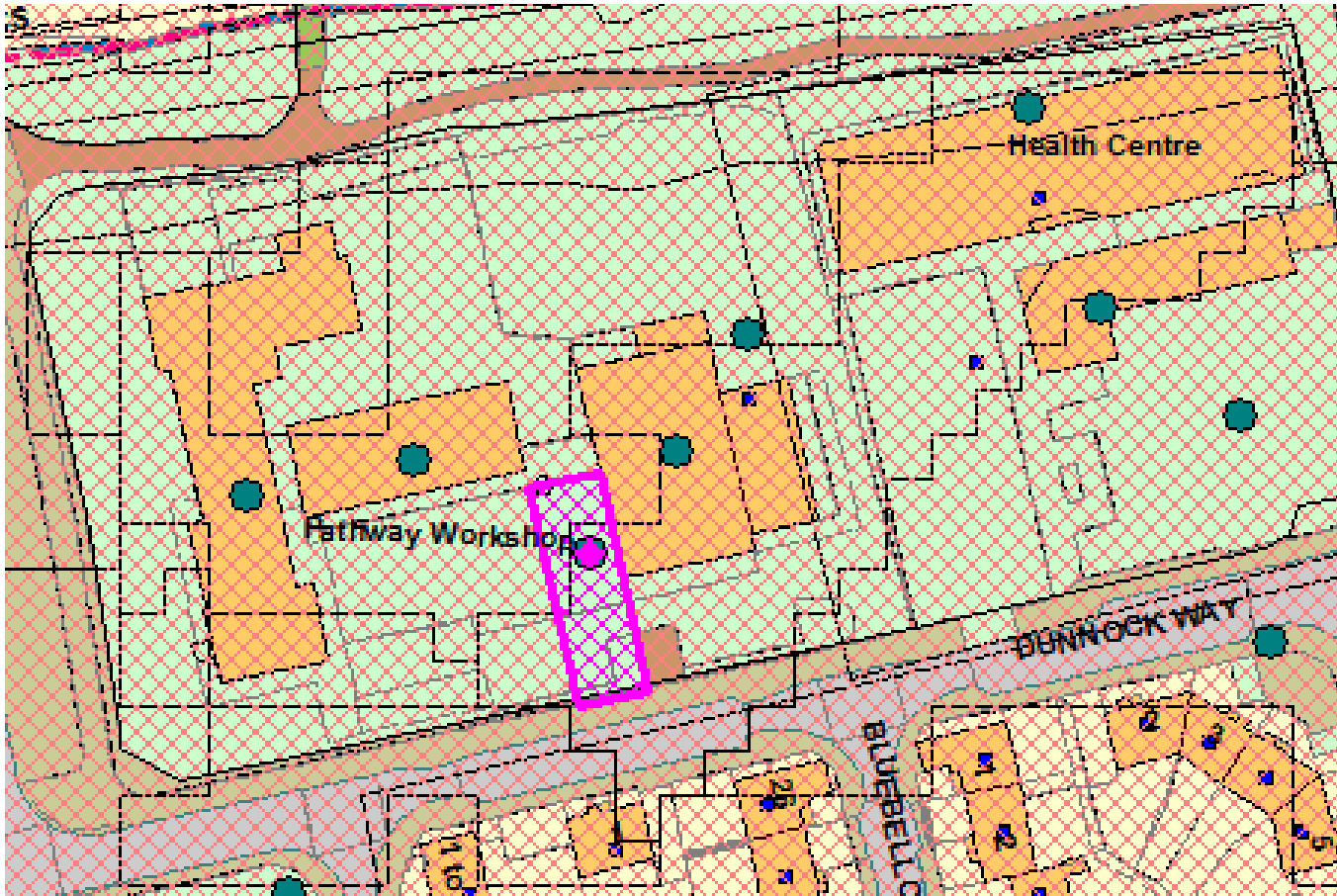
Welcome to the East Area Planning Committee

- This planning committee meeting is held in public but it is not a public meeting.
- There will be an opportunity for the public to address the committee on each application.
- If you wish to speak for or against a planning application, you need to have either requested it in advance, or hand in one of the available speaker forms, or speak to the clerk.
- Information on meeting protocol and conduct at the committee is set out in the Code of Practice.
- This is in the committee agenda just before the first planning application report.

49



50



N

© Crown Copyright and database right 2011.
Ordnance Survey 100019348

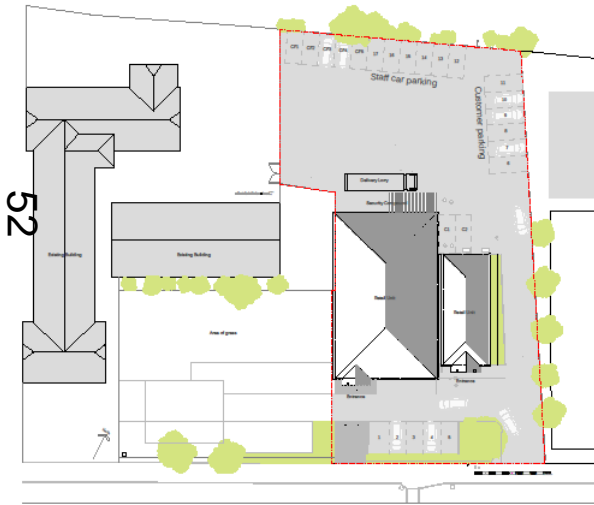
Site Location Plan



www.oxford.gov.uk



Existing Plans



Site layout 1:500



Location 1:1250

Existing Plans

General Notes
Do not scale dimensions from this drawing. It should add. All dimensions should be checked on site.

The drawing is to be read in conjunction with all relevant other drawings, detailed specifications, Engineer's drawings, detail sheets and schedules. Assumptions have been made on some of the detail to existing fabric. Any discrepancies or differences to be reported back to the main contractor upon opening up.

Materials and workmanship
Any building work to be carried out with proper materials and in a workmanlike manner in accordance with regulation 7 of the Building Regulations. The Builder may show compliance with regulation 7 in a number of ways including the appropriate use of a product bearing CE marking in accordance with the Construction Products Directive (CPD/CPR) as amended by the CE Marking Directive (2004/10/EC) or a product complying with an appropriate technical specification (as defined in these Directives), a British Standard or an alternative national technical specification of any state which is a contracting party to the European Economic Area which in use is equivalent to a product covered by a national or European certificate issued by a European Technical Approval issuing body, and the conditions of use are in accordance with the terms of the certificate.

1. Revision No. 01
Date: 08/08/2014



Unit 1 - The Hall
High Street,
Tatworth,
Oxfordshire
OX9 7AB
07766 80000

Copyright © 2014 al3d

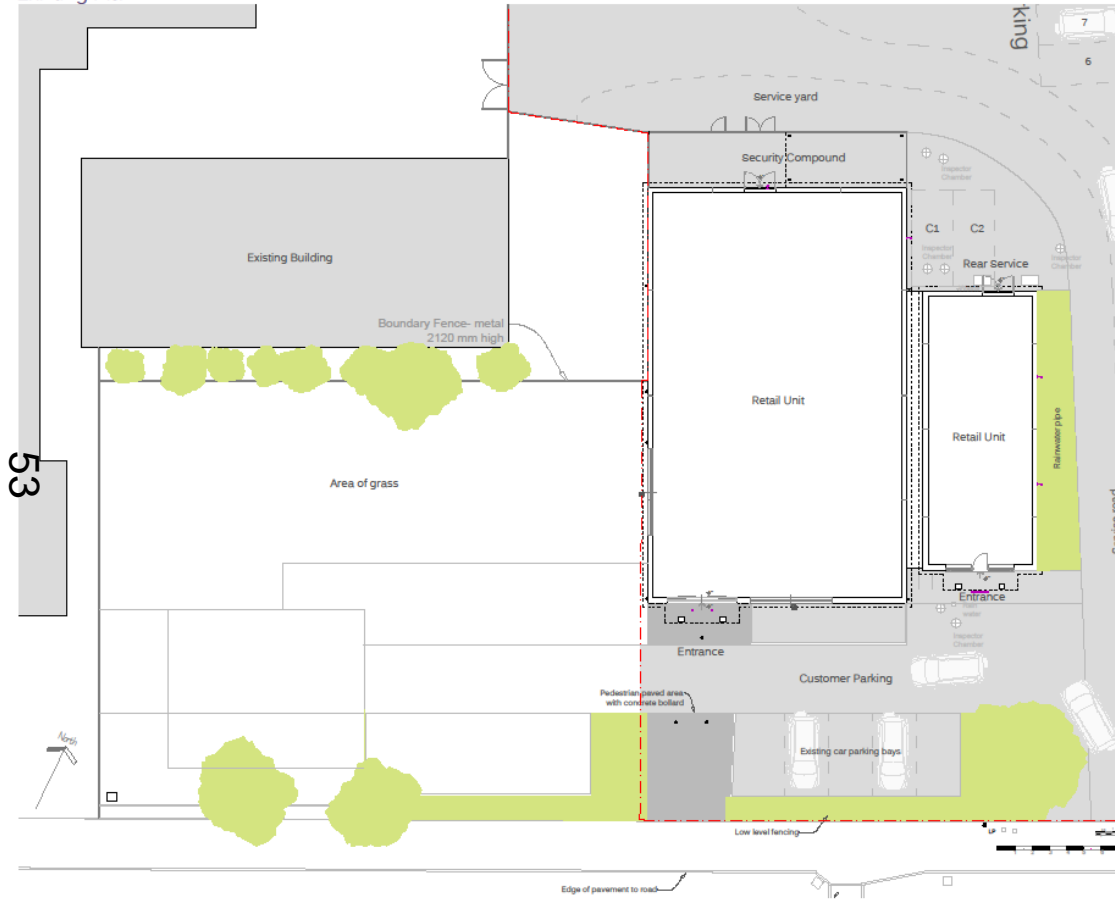
Project Name and Address
Dunstock Way,
Oxford,
Oxfordshire, OX4 7EX

Drawing Title
Location plan,
site plan existing

Drawing No: | 2403 (10) |
Date: 16 Jul 15 | No. sheets: | 1 |

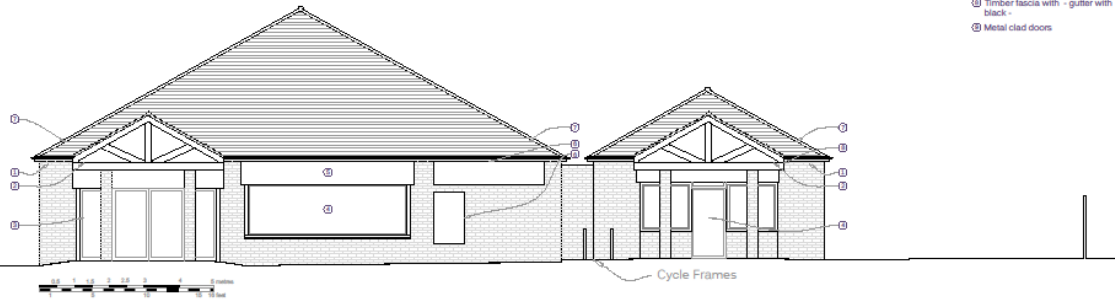


Existing Plan

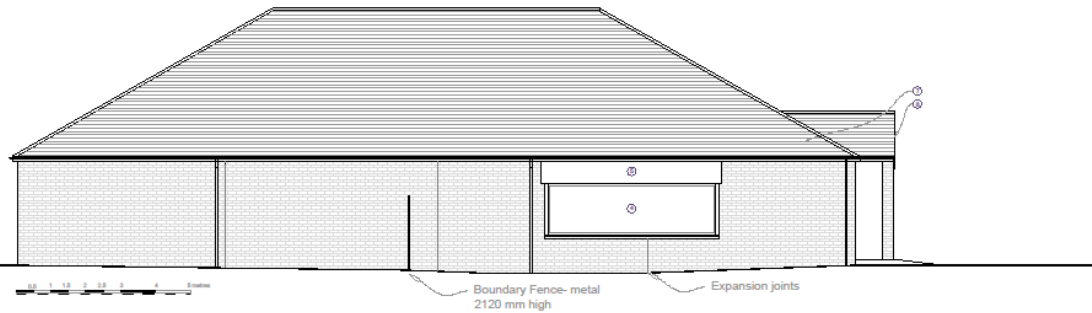


Existing Elevations

54
South Elevation



West Elevation



- 1 Brick - colour yellow
- 2 Timber treated front
- 3 Aluminum doors with external security shutters
- 4 Aluminum window with external security shutter
- 5 Stone fascia
- 6 Signage
- 7 Roof tiles - Pantile brown clay tiles
- 8 Timber fascia with - gutter with black -
- 9 Metal clad doors

General Notes
Do not scale dimensions from this drawing. Fit details and all dimensions should be checked on site.

This drawing is to be read in conjunction with all relevant other drawings. Detailed specifications, Engineer drawings, Detail sheets and calculations. Assumptions have been made in terms of the detail in existing fabric, any discrepancies or differences to be reported back by the main contractor upon opening up.

Materials and workmanship: Building work to be carried out with proper materials and in a workmanlike manner in accordance with regulation of the Building Regulations. The builder may show compliance with regulation in a number of ways including the appropriate use of a product bearing CE marking in accordance with the Construction Products Directive (CPD/CECE) as amended by the CE Marking Directive (EM/CECE) or a product complying with an appropriate technical specification (as defined) in those countries. A British Standard or an alternative national technical specification of any year which is contracting party to the European Economic Area which is an equivalent or a product covered by a national or European certificate issued by a European Technical Approval issuing body and the conditions of use are in accordance with the terms of the certificate.

Existing Elevations

al3d
PROJECTS
DESIGN • DEVELOPMENT • CONSTRUCTION

Unit 1 - The Hall
High Street,
Tetworth,
Oxfordshire
OX9 3AD
0756 822628

Copyright © 2014 al3d
Project Name and Address:
Dunrook Way,
Oxford,
Oxfordshire, OX4 7EX

Showing the
Elevations South and West -
existing

Drawing No: 1_2450100
Date: 25 Jul 15 10:01 AM



Existing Elevations

- ⓪ Brick - colour yellow
- Ⓛ Timber treated front
- Ⓜ Aluminum doors with external security shutters
- Ⓨ Aluminum window with external security shutter
- Ⓩ Store fascia
- ⓐ Signage
- ⓑ Roof tiles - Pantile brown clay tiles
- ⓓ Timber fascia with - gutter with black -
- ⓔ Metal clad doors

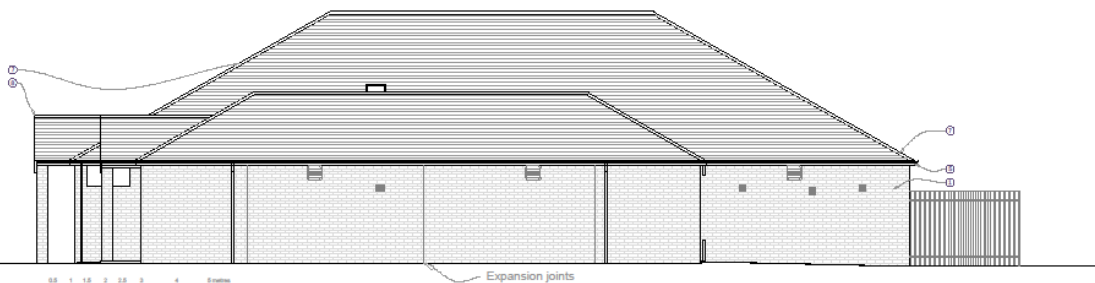
General Notes
Do not scale dimensions from this drawing. If in doubt ask. All dimensions should be checked on site.

This drawing is to be read in conjunction with all relevant other drawings, detailed specifications, Engineer's drawings, Detail sheets and schedules. Alterations have been made on some of the detail drawings. Note: Any discrepancies or differences to be reported back by the main contractor upon opening up.

Materials and workmanship
Any building work to be carried out with proper materials and in a workmanlike manner in accordance with regulation 7 of the Building Regulations. The builder may show compliance with regulation 7 in a number of ways including the appropriate use of product bearing CE marking in accordance with the Construction Products Directive (CEP/CPD/CPR) as assessed by the C.C. Marking Directive (SIS/ETEC) or a product complying with an appropriate technical specification (as defined in those Directives), a British Standard or an alternative national technical specification of any state which is a contracting party to the European Economic Area which is used as equivalent or a product covered by a national or European certificate issued by a European Technical Approval issuing body, and the conditions of use are in accordance with the terms of the certificate.



North Elevation
55



East Elevation

Existing Elevations

al3d PROJECTS
UNIT 1 - The Hall
High Street,
Tatworth,
Oxfordshire
OX5 7AB
07766 880805

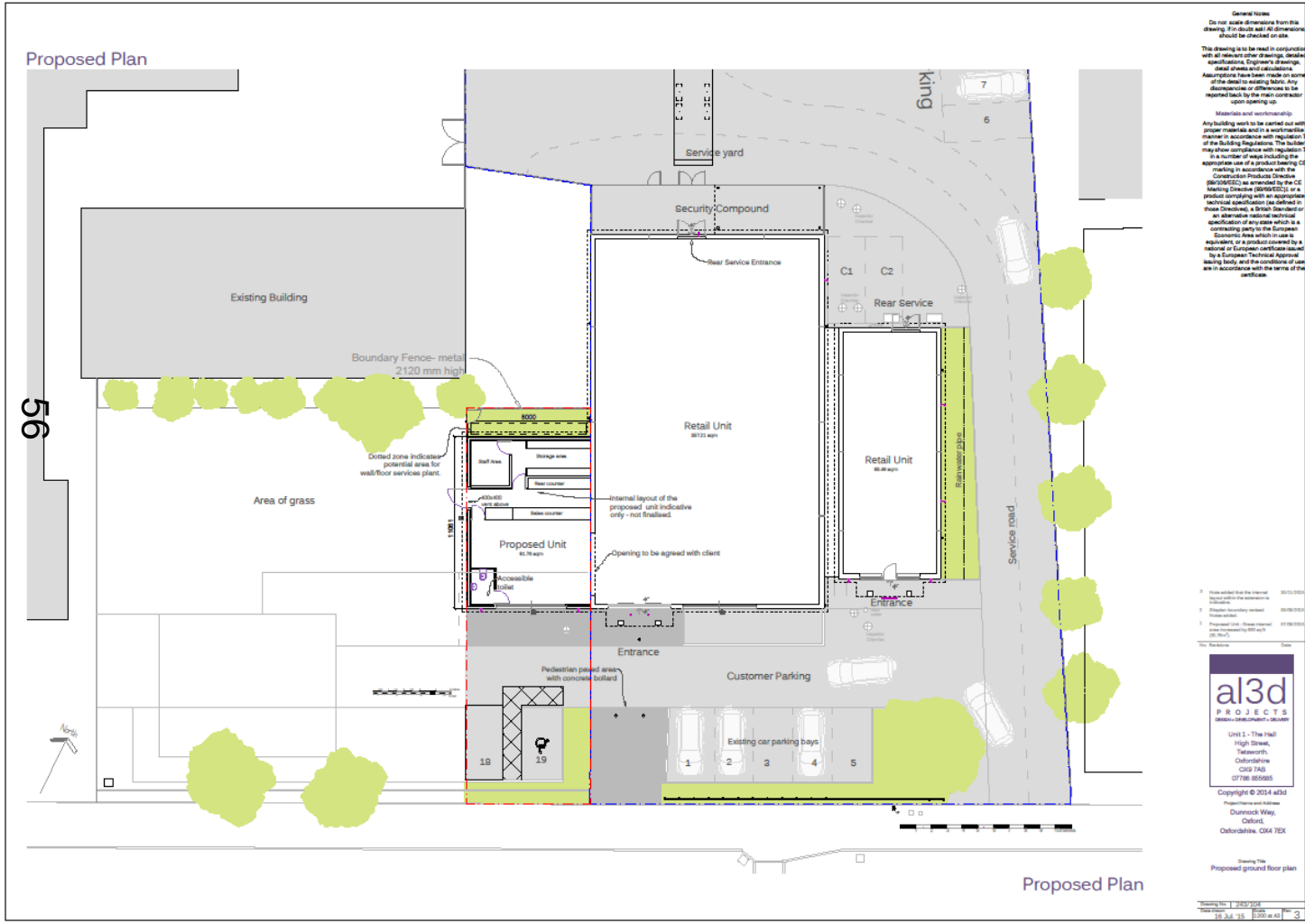
Copyright © 2014 al3d
Project Name and Address:
Dunrook Way,
Oxford,
Oxfordshire, OX4 7EX

Drawing Title:
Elevations North and East -
existing

Drawing No: 1 2014 100
Scale: 1:100
Date: 16 Jul '15
Sheet No: 0

www.oxford.gov.uk





General Notes:
Do not scale dimensions from the drawing. Fit-check all dimensions should be checked on site.

This drawing is to be read in conjunction with all relevant other drawings, including: Architectural, Engineer's drawings, retail scheme and site conditions. Assumptions have been made in the course of the design to existing fabric. Any discrepancies or omissions to be reported back by the main contractor upon opening up.

Materials and workmanship:
Any building work to be carried out use proper materials and in a workmanlike manner in accordance with regulation 7 of the Building Regulations. The builder may show compliance with regulation 7 as a number of ways including the appropriate use of a product bearing CE marking in accordance with the Construction Products Directive (CEN EN10628) as amended by the CE marking Directive (EN10628) or a product complying with an appropriate technical specification as defined by those Directives, a British Standard for an alternative national technical specification of any type which is a contracting party to the European Economic Area which in use is equivalent to a product covered by a national or European certificate issued by a European Technical Approval body and the conditions of use are in accordance with the terms of the certificate.

- 1. Issue number that the original design was for: 00/01/2014
- 2. Issue number: 00/01/2014
- 3. Issue number: 00/01/2014
- 4. Issue number: 00/01/2014
- 5. Issue number: 00/01/2014

a3d
PROJECTS

Unit 1 - The Hall
High Street,
Tadworth,
Oxfordshire
OX9 7AB
(07766 30202)

Copyright © 2014 a3d
Project Name and Address:
Dunmuck Way,
Oxford,
Oxfordshire, OX4 7EX

Drawing Title:
Proposed ground floor plan

Sheeting No: 1 of 1
Drawing No: 1000/1000
Date: 18 Jul '15 E000 40 3



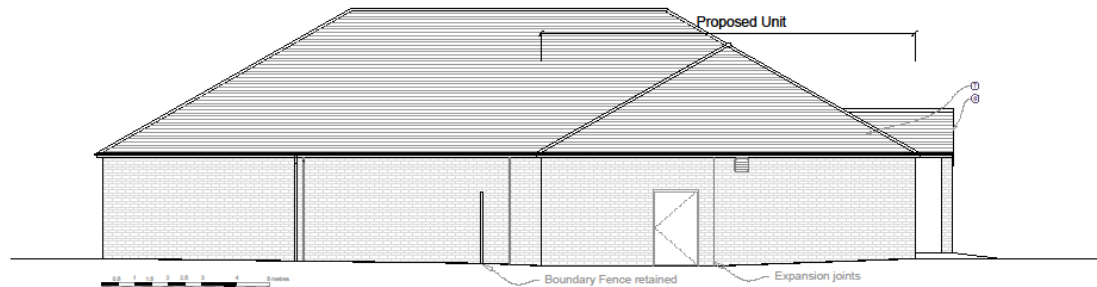
New Elevations

- ① Bricks
- ② Timber
- ③ Aluminium
- ④ Aluminium
- ⑤ Stone
- ⑥ Sign
- ⑦ Roof
- ⑧ Timber
- ⑨ Metal



South Elevation

57



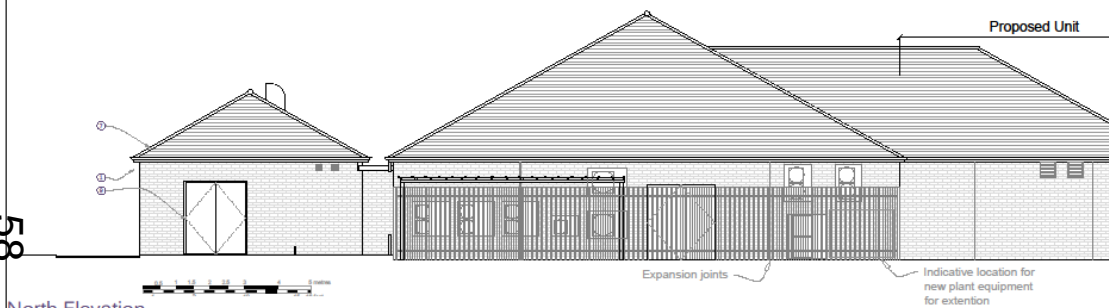
West Elevation

Ne

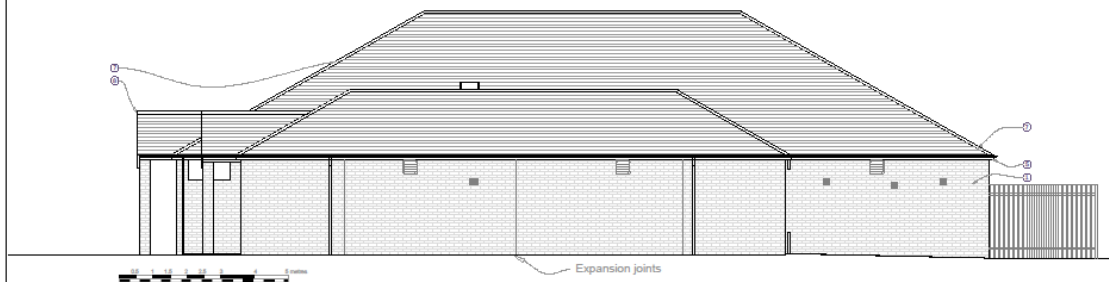


New Elevations

- ① Brick
- ② Tint
- ③ Alun
- ④ Alun
- ⑤ Alun
- ⑥ Stone
- ⑦ Sign
- ⑧ Roof
- ⑨ Tint
- ⑩ black
- ⑪ Metal



North Elevation



East Elevation

Net

